

FOR WATER USE

KS Mark certified product



KS표시인증



한국상하수도협회
KCI-2018-0022



특허청



ISO 9001



조달청

DAEHAN Water Meter



(DHG) DAEHAN METER TECH CO.,LTD.

www.dhmeter.co.kr

MANIPULATION PREVENTIVE CAP FOR TANGENTIAL WING-TYPE HIGHLY-SENSITIVE MULTI - WET WATER METER



KS MARK CERTIFIED PRODUCT (KS B 50049-1)

MW Type : 15, 20, 25, 32, 40, 50mm



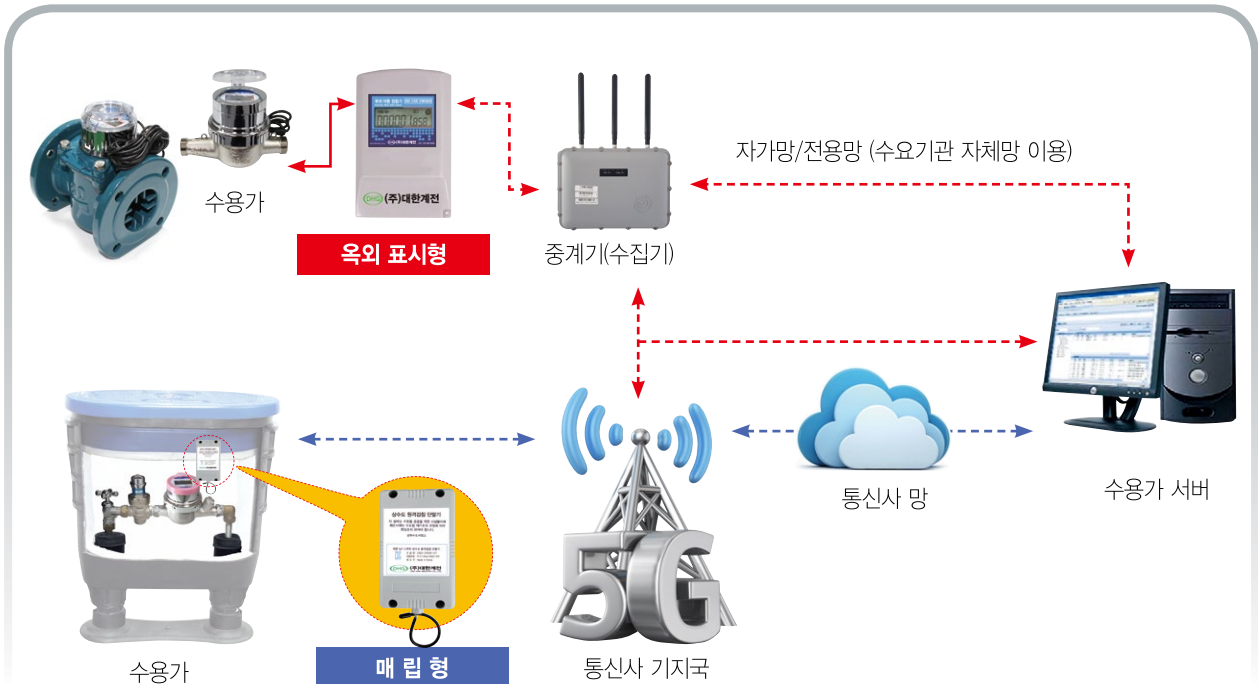
Performance and Dimensions

Specification(mm)		Unit	15		20	25	32	40	50
Q ₃ / Q ₁ R			80	160	100	100	100	100	100
Starting flow		L/h	6	6	10	12	15	30	50
Minimum flows(Q ₁)	±5%	m³/h	0.031	0.0156	0.025	0.04	0.063	0.1	0.16
Q ₂ / Q ₁ R	±2%	m³/h	0.05	0.025	0.1	0.16	0.252	0.4	0.64
Maximum flows(Q ₃)	±2%	m³/h	2.5	2.5	2.5	4.0	6.3	10	16
Range of appropriate flows		m³/h	0.016~1.2	0.016~1.2	0.025~1.2	0.04~1.5	0.063~3.0	0.1~5.0	0.16~8.0
Maximum indication		m³	9,999	9,999	99,999				999,999
Meter's length	L(mm)		165	165	190	225	230	245	305
Meter Height	H(mm)		100	100	109	114	116	130	155
Meter Width	W(mm)		95	95	100	100	100	117	138
Meter Connection screws	D(inch)		PT 3/4	PT 3/4	PF1	PT1 1/4	PF1 1/2	PF2	PF2 1/2
Mounting connection screws	(inch)		PT 1/2	PT 1/2	PT 3/4	PT1	PT1 1/4	PT1 1/2	PT2

- Installation conditions : Meter face horizontal
- Less than maximum operating temperature : 30°C

- Maximum operating pressure : 10bar

DAEHAN SMART REMOTE METER READING SOLUTIONS (CONFIGURATION DIAGRAM)



NEW TECHNOLOGY



Production item

- ▶ Water Meter (15 ~ 300 mm)
- ▶ Multi - Jet Wet / Multi - Jet Dry
- ▶ Multi - Jet Dry Digital / Waltman
- ▶ Single - Jet Dry / Single - Jet Dry Digital
- ▶ Calorimeter (15 ~ 25 mm)
- ▶ Pressure Reducing Valve
- ▶ Angle Valve for Water

DHG DAEHAN METER TECH CO.,LTD.

100, Hwanggeum-ro 89beon-gil, Yangchon-eup, Gimpo-si, Gyeonggi-do
TEL : 82-31-988-0658 FAX : 82-31-988-0670 www.dhmeter.co.kr